



Nextpiont Construction Demonstrative Samples

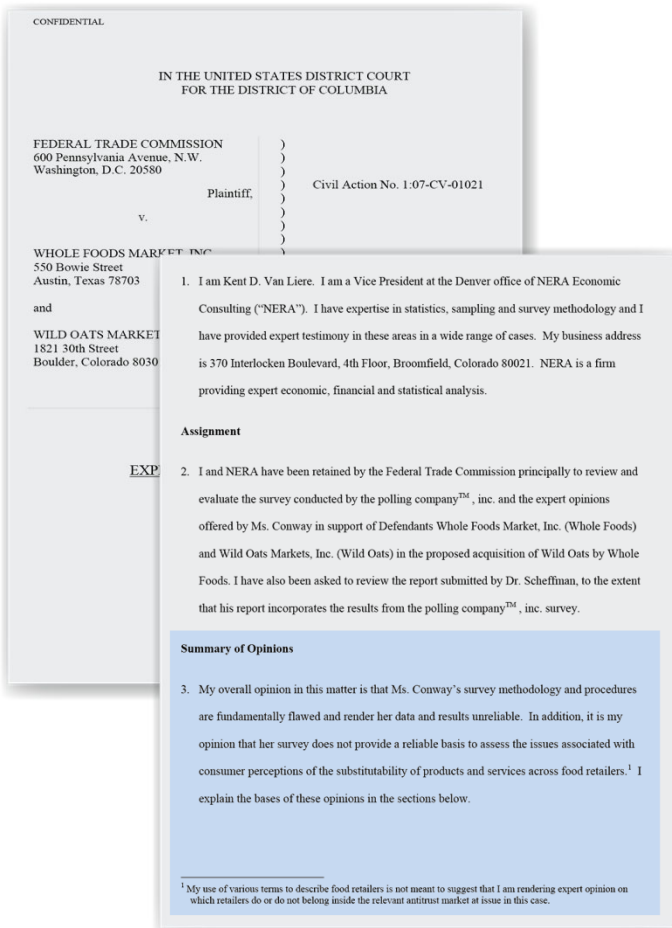
The Doctrine of *Res Judicata*

- Generally, *res judicata* will apply whenever the following three requirements are met:
 1. the parties to the present and prior proceedings are the same;
 2. the prior proceeding was resolved by final judgment on the merits; and
 3. the cause of action is the same, such that the plaintiff could have raised his or her later claim in the earlier proceeding.

Andrew Robinson, 547 F.3d at 53.

Here, all three requirements are met.

Expert Report of Kent Van Liere, Ph.D.



Summary of Opinions

3. My overall opinion in this matter is that Ms. Conway's survey methodology and procedures are fundamentally flawed and render her data and results unreliable. In addition, it is my opinion that her survey does not provide a reliable basis to assess the issues associated with consumer perceptions of the substitutability of products and services across food retailers.¹ I explain the bases of these opinions in the sections below.

¹ My use of various terms to describe food retailers is not meant to suggest that I am rendering expert opinion on which retailers do or do not belong inside the relevant antitrust market at issue in this case.



Fundamentally flawed



Data and results unreliable

Santiago's "Top Secret" Plan in 2022

TOP SECRET

From: Kayleigh Santiago
Sent: Tuesday, August 23, 2022 4:15 PM
To: Mekhi Hampton; London Duke; Ezra Nelson
Subject: PROJECT GEMINI - TOP SECRET

GEMINI 2022

Make sure only the Strike Team is aware of the upcoming plan. We've only got one shot to make this project a success! \$10M in Revenue here we come!

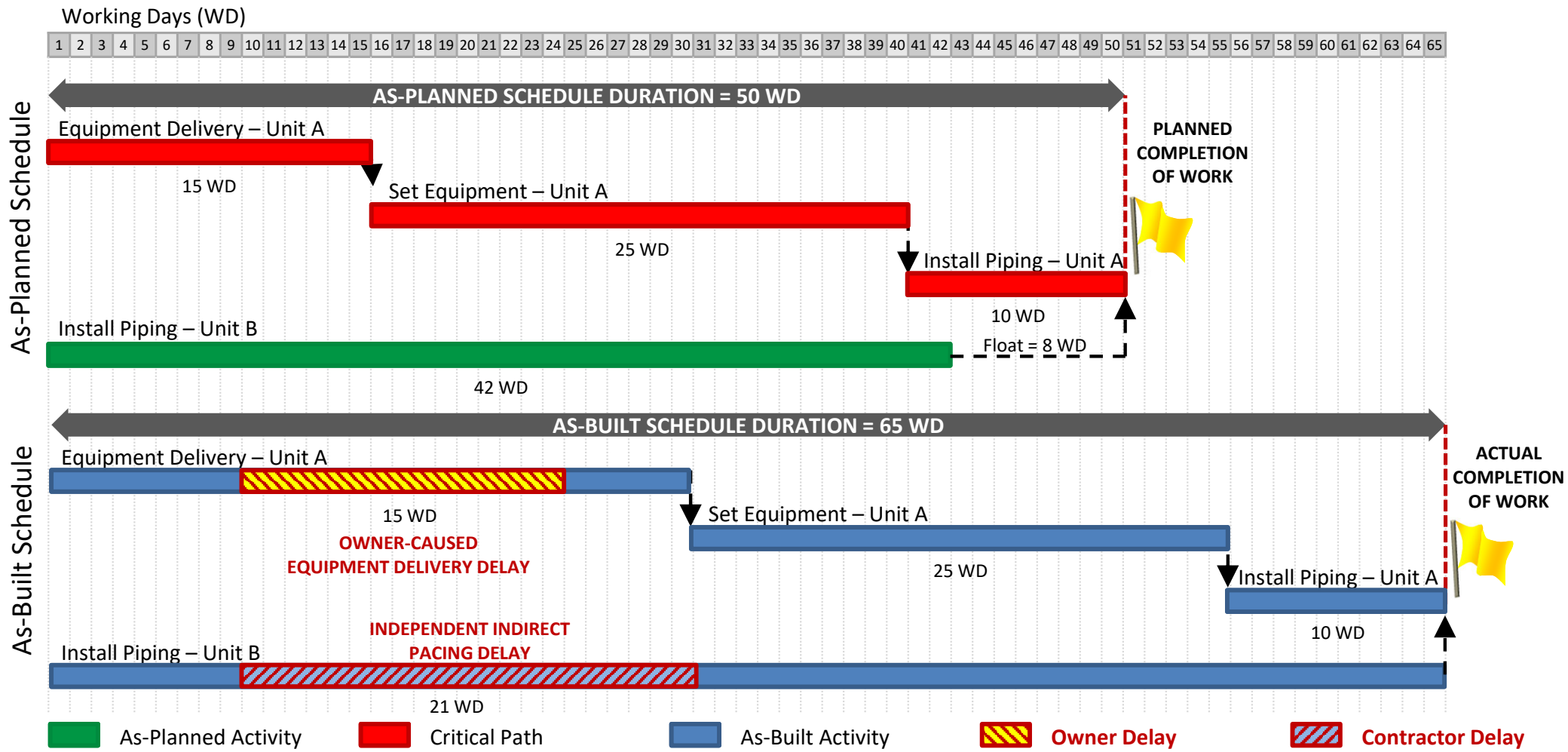
ACME's Misdirection



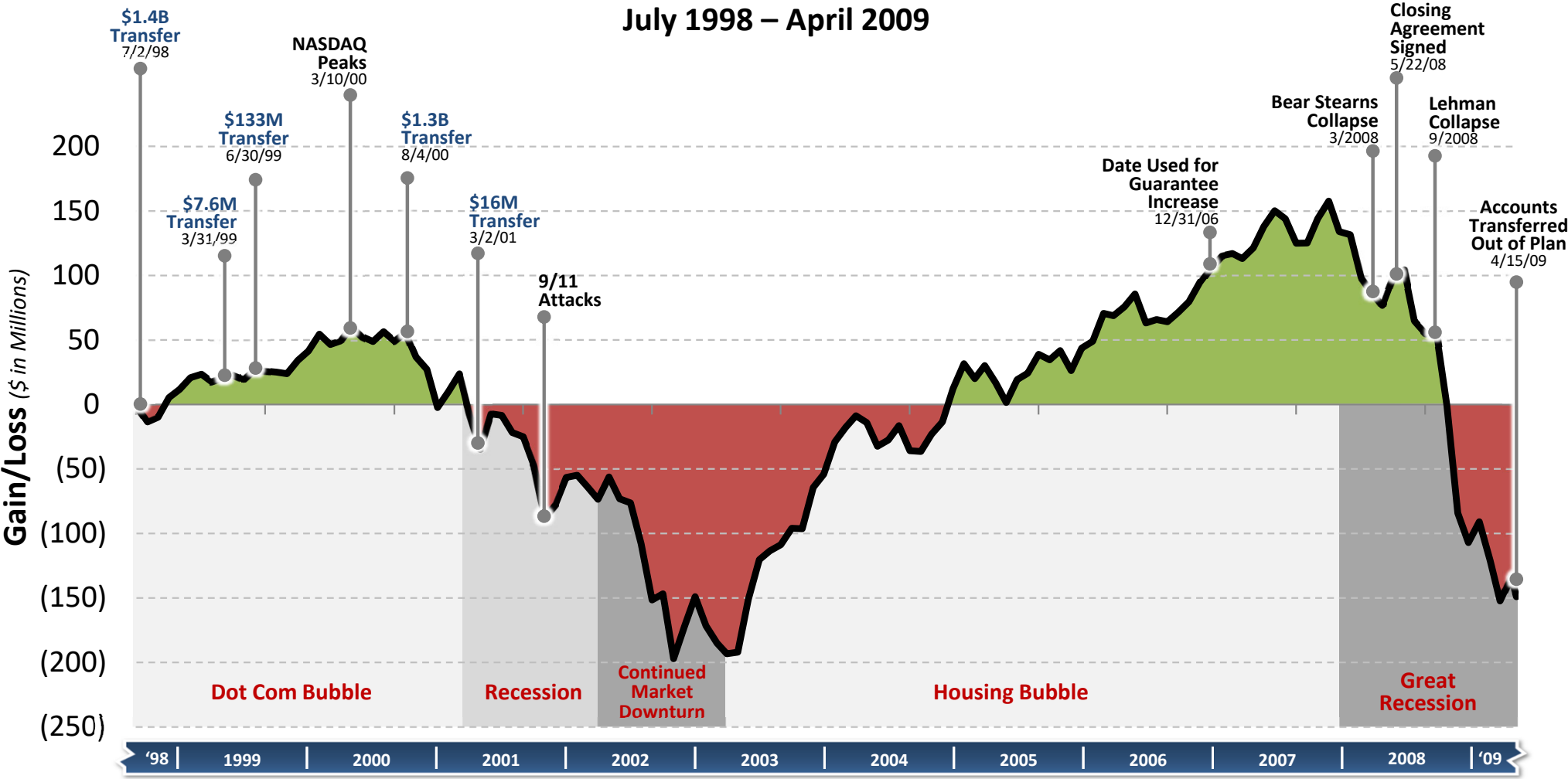
ACME Insurance Company

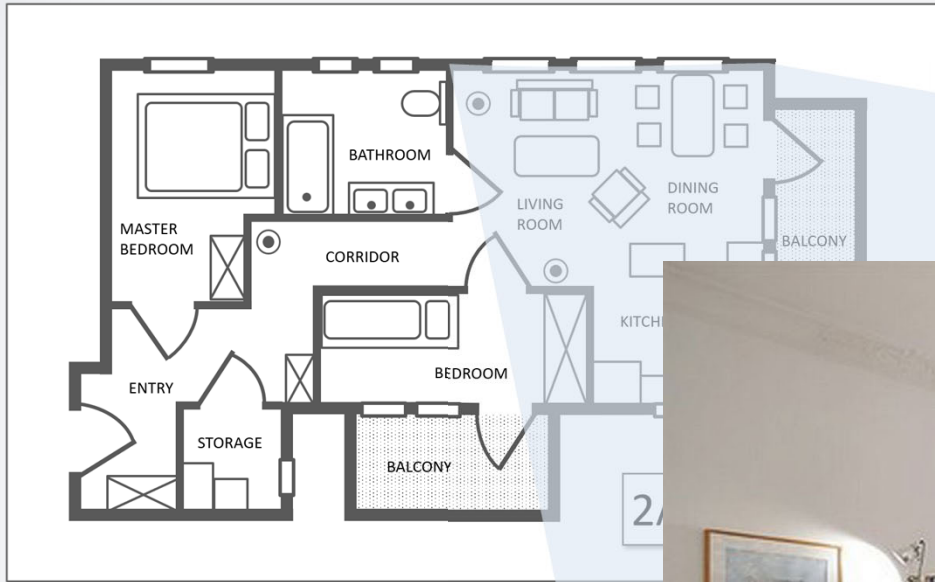
- ✗ Misrepresented Reinsurers' positions.
- ✗ Ignored the definition of "Loss Occurrence."
- ✗ Emphasized terms not in Article 8.A. or 8.A.3., such as "maximum" and "up to."
- ✗ Misapplied "limited to"
- ✗ Ignored the contextual meaning of the word "period" in Article 8.C. in light of the other provisions of Article 8.

Construction Delays



Cumulative Gain/Loss Associated With Transferred Assets







John Smith



Mark Jones



Michelle Morris



Aaron Collins

11/05/2021 6:15 PM – 45th and Balboa

I'm just leaving the office now, I should be able to meet you up in about 45 min.



Smith's Office

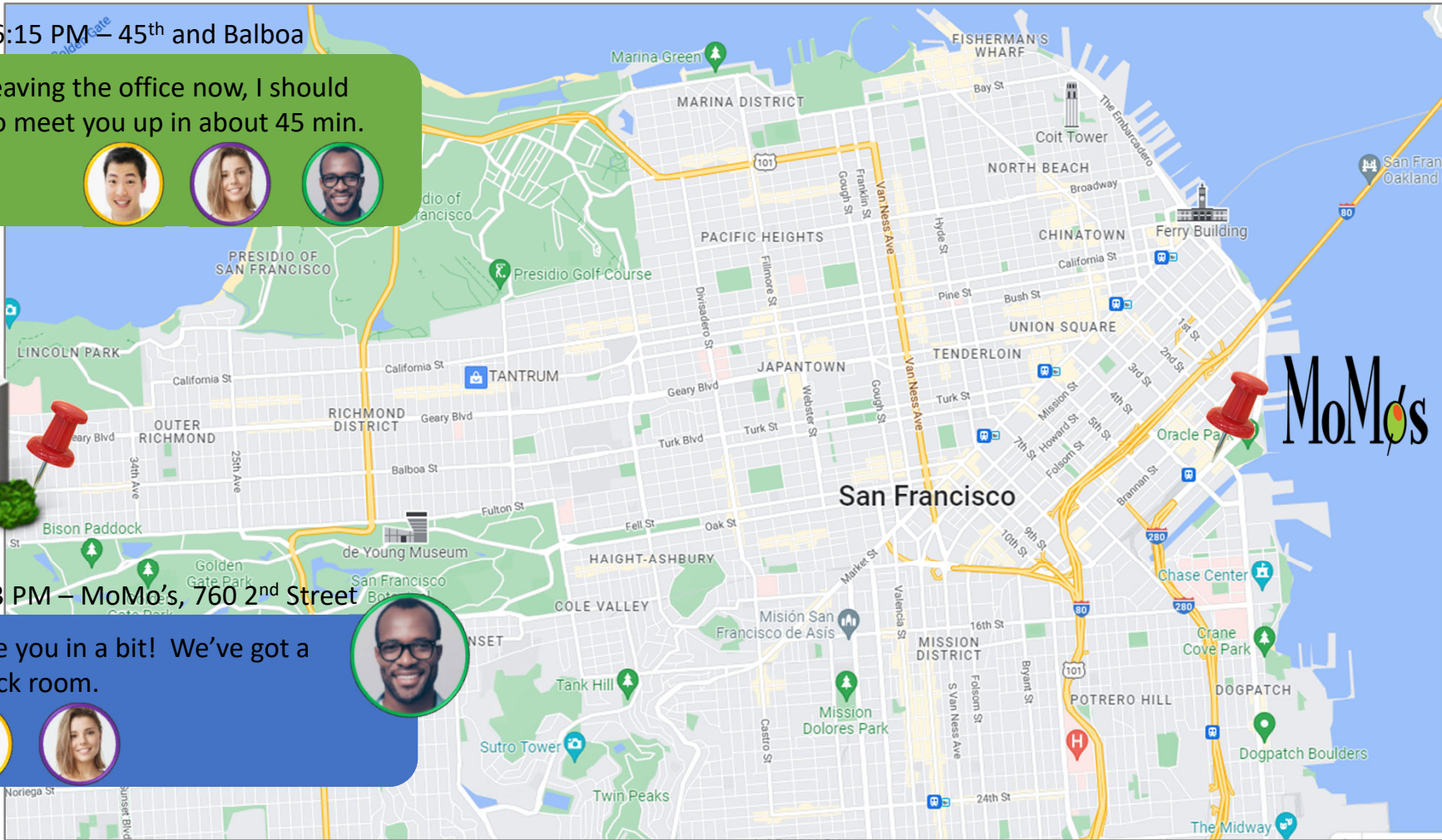


11/05/2021 6:203 PM – MoMo's, 760 2nd Street

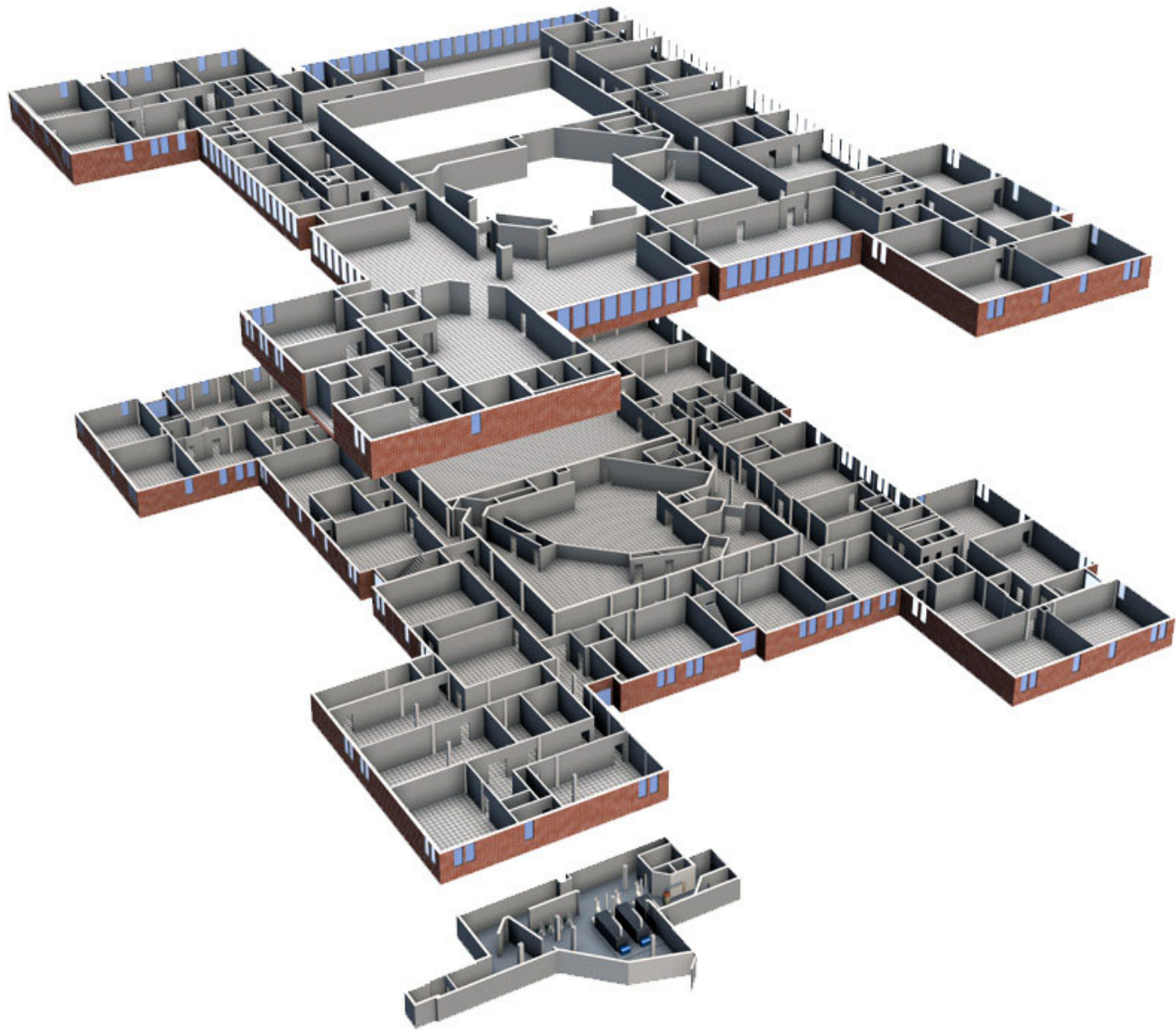
Great, we'll see you in a bit! We've got a table in the back room.



MoMoes

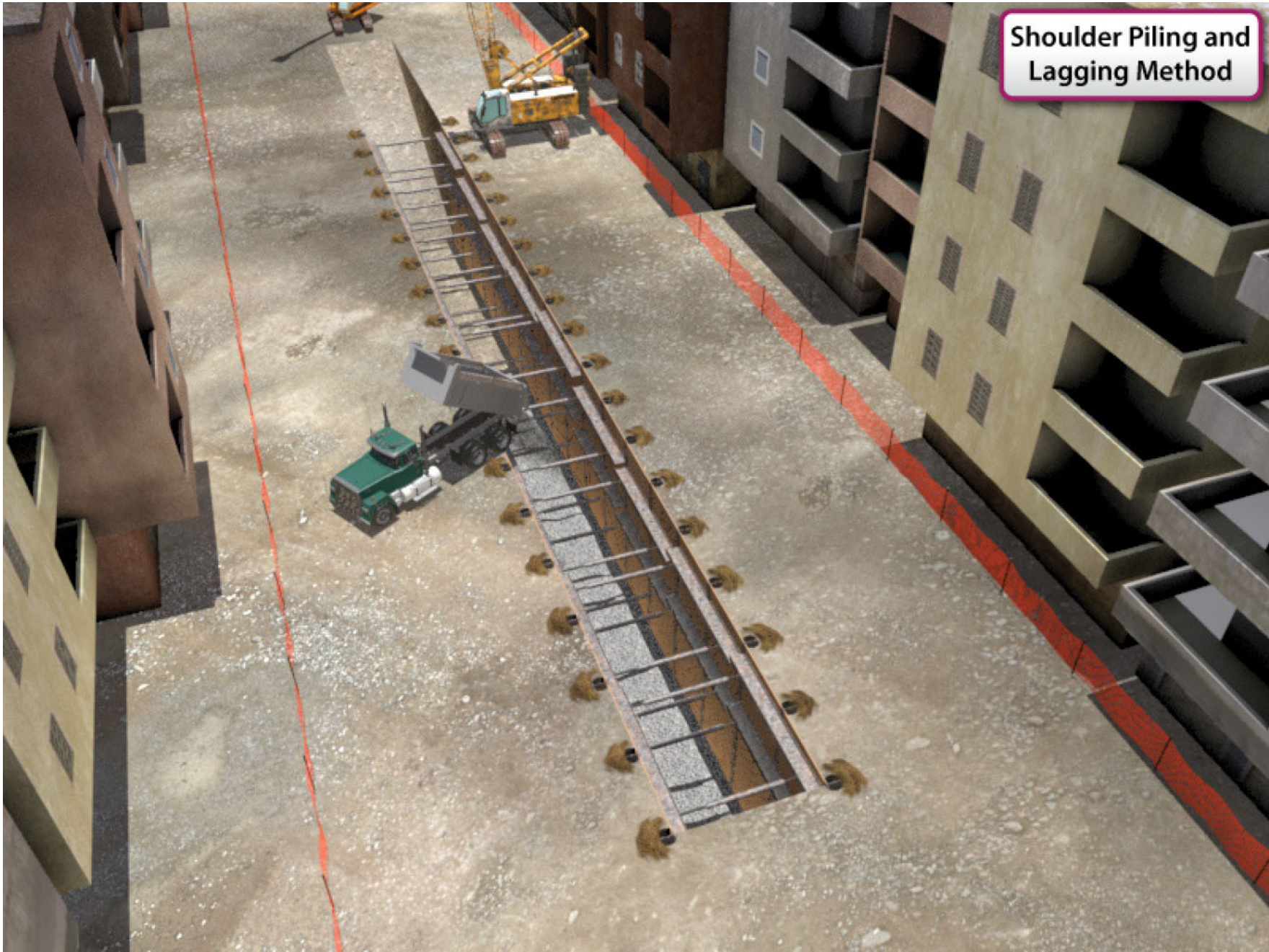


Testimony of A. Collins



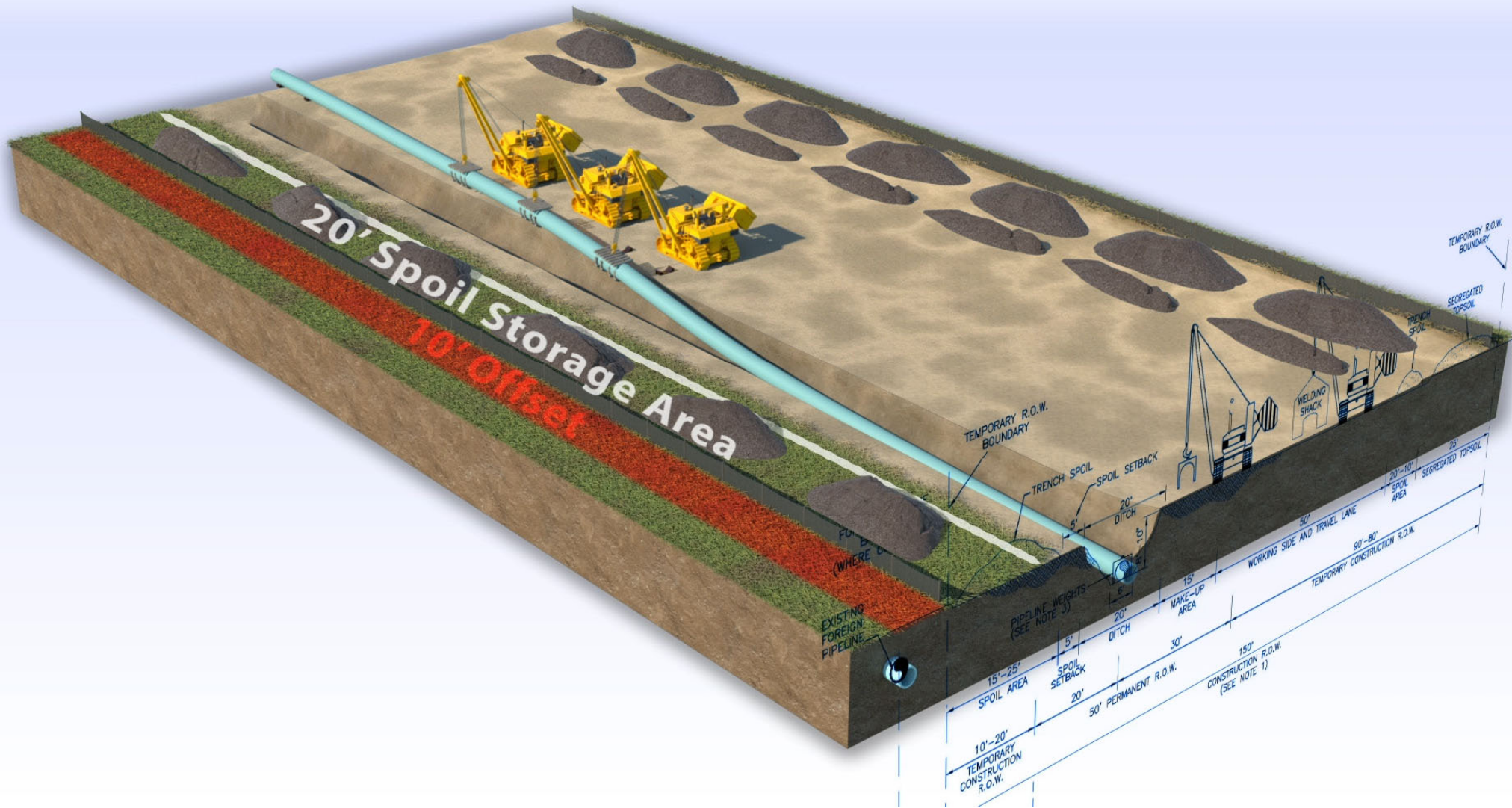


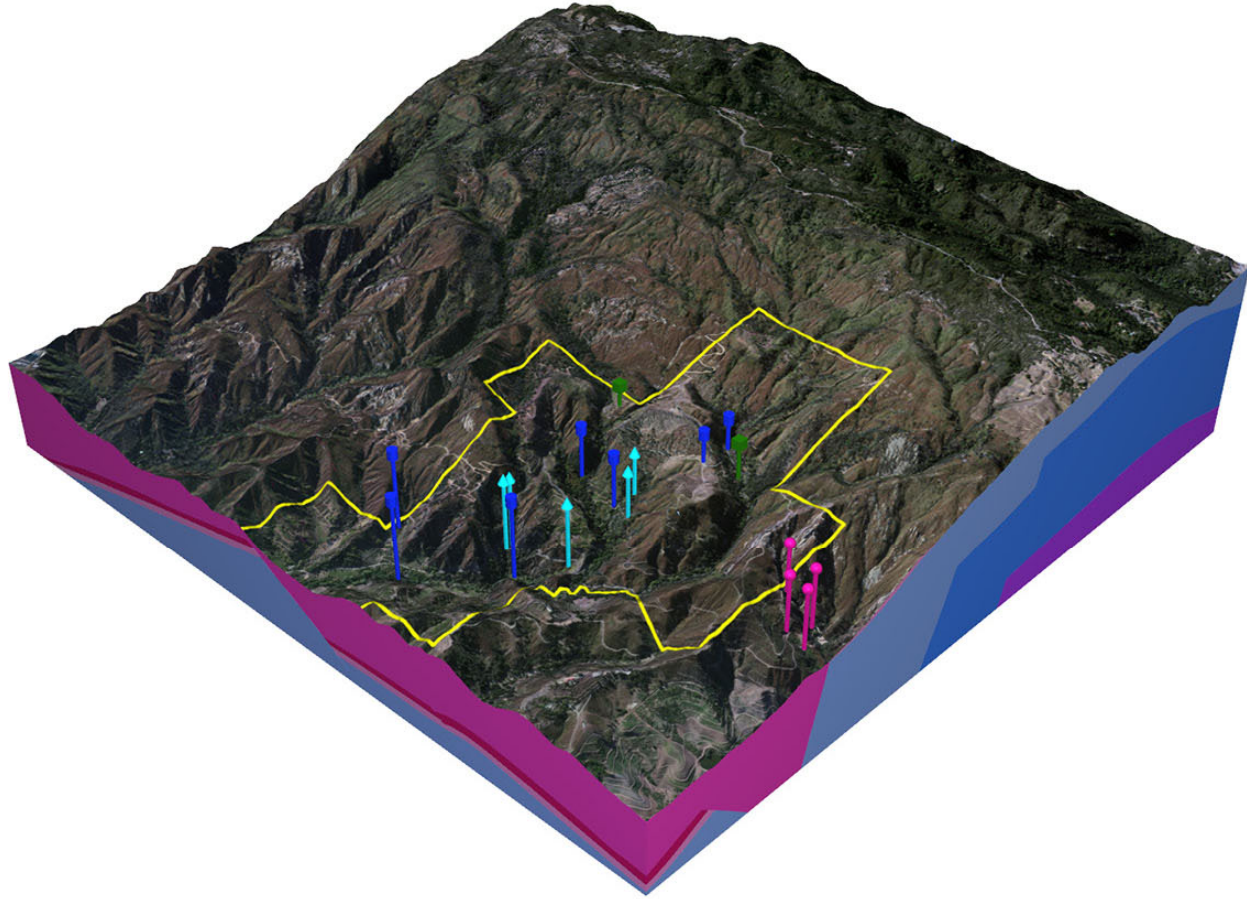
Shoulder Piling and
Lagging Method




Krings
Method








 Active Wells

 Inactive Wells

 RDC Wells

 Springs

 Tcw – Coldwater Sandstone

 Ts/Tcd – Sacate Formation / Cozy Dell Shale, Shale, Sandstone

 Tspu – Upper Sandstone & Mudstone Unit

 Tma – Matilija Sandstone

 Tspl – Lower Conglomerate & Sandstone Unit

 Tspm – Mid Conglomerate & Sandstone Unit